



DOWNTOWN REVITALIZATION – PHASE II

ADDENDUM NO. 1

DATE: July 3, 2019

BID OPENING: Thursday, July 11, 2019 @ 2:00:00 P.M.

PAGES: Addendum (4 pages)
Bid Form (11 pages)
Bid Bond (2 pages)
Drawings (3 sheets)

.....
Acknowledge receipt of this Addendum by inserting its number and date on the Bid Form. Failure to do so may subject bidder to disqualification. This Addendum forms a part of the Contract Documents. It modifies the Contract Documents as follows:

PART 2, INSTRUCTIONS TO BIDDERS

ARTICLE 11 – PREPARATION OF BID

Replace Article 11.02 with the following:

11.02 All blanks on the Bid Form shall be completed in ink and the Bid Form signed. Erasures or alterations shall be initialed in ink by the person signing the Bid Form. A Bid price shall be indicated for each Bid item listed therein with the exception of Additive Alternate #3: Acceleration Bonus which shall be an optional bid item.

ARTICLE 13 – SUBMITTAL OF BID

Replace Article 13.03 with the following:

The Bidding Documents on this project requires the Bidder to submit a bid on Additive Alternative No. 2 only; submitting a bid on Additive Alternate No. 3 is optional.

Replace Article 13.03.A with the following:

- A. The bid proposal is composed of the following parts: Base Bid – Schedule A, Additive Alternate #2 – Schedule C, and Additive Alternate #3 – Schedule D.

Replace Article 13.03.E with the following:

- E. The Bidder shall submit a price on each and every item of work included in the base bid. The Bidder shall also submit prices on Additive Alternate #2 – Schedule C. Optional Additive Alternate #3 – Schedule D is an optional bid item.

PART 3, BID FORM

Replace Bid Form in its entirety.

A number of changes have been made to the Bid Form. New Bid Form pages 1 through 11 have been included in this addendum and shall be used when submitting bids for this project. A summary of the changes are as follows:

- Bid item 201.4.H.1, Permanent Shoring, Coal Chutes - Bid item number has been changed to 201.4.1.H.1.
- Bid Item 601.4.1.A.11; 4-Inch Storm Drain Service Cleanout - The pay unit description has been changed from linear foot to Each.
- Bid Item 602.4.1.E.1 Storm Drain Catch Manhole - The item number has been changed to 602.4.1.A.1; The description has been changed to Storm Drain Manhole, Type A; the quantity has been reduced from 9 to 6.
- Added Bid Item 602.4.1.A.2, Storm Drain Manhole, Type B.
- BID SCHEDULE B – ADDITIVE ALTERNATE #1: IRRIGATION SYSTEM - This additive Alternate has been eliminated. Bid Item 901.4.1.C.1, Pressure Irrigation System has been added to the BASE BID SCHEDULE.
- BID SCHEDULE D – ADDITIVE ALTERNATE #3: ACCELERATED SCHEDULE – The title of this section has been changed to, BID SCHEDULE D – OPTIONAL ADDITIVE ALTERNATE #3: ACCELERATION BONUS.
- ARTICLE 6 – TIME OF COMPLETION & EMPLOYMENT – References to Additive Alternate #1 removed; added clarity to Additive Alternate #3 as an optional bonus.

PART 3, BID BOND

Replace Bid Bond form in its entirety.

PART 7, SPECIAL PROVISIONS

SECTION 601 CULVERT, STORM DRAIN, AND GRAVITY IRRIGATION PIPE

PART 4 MEASUREMENT AND PAYMENT

Replace 4.1.A.2 as follows:

2. 30 – inch Storm Drain Pipe, Class ASTM F- 679 PVC... linear foot (LF)

Replace 4.1.A.4 as follows:

4. 24 – inch Storm Drain Pipe, Class ASTM F – 679 PVC ... linear foot (LF)

Replace 4.1.A.6 as follows:

6. 18 – inch Storm Drain Pipe, Class ASTM F – 679 PVC... linear foot (LF)

SECTION 702 CONCRETE REINFORCEMENT

PART 2 MATERIALS

Add the following new paragraph after 2.1.F:

- 2.1.G Concrete Reinforcing Fiber: Concrete reinforcing fiber shall be alkali-resistant cellulose fibers meeting the requirements of ASTM C 1116 and ASTM D 7357.

SECTION 706 OTHER CONCRETE CONSTRUCTION

PART 2 MATERIALS

2.4 PORTLAND CEMENT CONCRETE

Add the following new paragraph after 2.4.A.4:

- 2.4.A.5 Portland Cement Concrete shall contain concrete reinforcing fiber meeting the requirements of Section 702.2.1.G. Fiber shall be included in the mix design at a dosage rate of 1.5 lb/yd³.

SECTION 901 PRESSURE IRRIGATION PIPE AND FITTINGS – ADDITIVE ALTERNATE #1

Change the title of this section to read:

SECTION 901 PRESSURE IRRIGATION SYSTEM

SECTION 1102 STREET LIGHTING

PART 2 MATERIALS

Delete paragraph 2.5.B.5 and replace with the following:

- 2.5.B.5 Fiber Optic Lines from Fiber Vaults to Pole Bases: ½” Orange Smoothwall HDPE, Sch 40 (min).

SECTION 2011 ADDITIVE ALTERNATE #3, ACCELERATED SCHEDULE

Delete this section in its entirety and replace with the following:

SECTION 2011 OPTIONAL ADDITIVE ALTERNATE #3, ACCELERATION BONUS

PART 1 GENERAL

1.1 SECTION INCLUDES

This Additive Alternate #3 consists of modifying the Contract to provide an incentive bonus for an accelerated schedule and Substantial Completion of all Work, except Plant Establishment, by the date specified for Milestone 2. If unable to achieve Substantial Completion by the date specified for Milestone 2, no payment associated with this bid item shall be made. All references to No Excuse Bonus terms and amounts are voided and replaced by the Additive Alternate #3 Acceleration Bonus. Liquidated damages and all other terms and conditions of the Contract remain in full force and effect. Acceptance of this Additive Alternate does not modify any other Bid items or Bid prices.

PART 2 MATERIALS

Not specified.

PART 3 WORKMANSHIP

Not specified.

PART 4 MEASUREMENT AND PAYMENT

4.1 **ADDITIVE ALTERNATE #3, ACCELERATION BONUS**, by the lump sum for all additional or deductive costs associated with achieving Substantial Completion of all Work, except Plant Establishment, by the date specified for Milestone 2.. No partial payment will be made for partial completion.

A. Bid Schedule Payment Reference: 2011.4.1.A.1.

B. Bid Schedule Description: ADDITIVE ALTERNATE #3, Acceleration Bonus... per lump sum (LS).

PART 9, CONTRACT DRAWINGS

Replace Drawings G-03, CP-09 and CP-10.

Modified plans sheets are included with this addendum. Changes to the drawings are “clouded”.

END OF ADDENDUM NO. 1

BID FORM
City of Sandpoint
Downtown Revitalization Phase II

ARTICLE 1 – BID RECIPIENT

1.01 This Bid is submitted to:

City of Sandpoint
1123 Lake Street
Sandpoint, ID 83864

1.02 The undersigned Bidder proposes and agrees, if this Bid is accepted, to enter into an Agreement with Owner in the form included in the Bidding Documents to perform all Work as specified or indicated in the Bidding Documents for the prices and within the times indicated in this Bid and in accordance with the other terms and conditions of the Bidding Documents.

ARTICLE 2 – BIDDER’S ACKNOWLEDGEMENTS

2.01 Bidder accepts all of the terms and conditions of the Advertisement, Instructions to Bidders, and Bidding Documents, including without limitation those dealing with the disposition of Bid security. This Bid will remain subject to acceptance for 60 days after the Bid opening, or for such longer period of time that Bidder may agree to in writing upon request of Owner.

ARTICLE 3 – BIDDER’S REPRESENTATIONS

3.01 In submitting this Bid, Bidder represents that:

A. Bidder has examined and carefully studied the Bidding Documents, other related data identified in the Bidding Documents, and the following Addenda, receipt of which is hereby acknowledged:

<u>Addendum No.</u>	<u>Addendum Date</u>
_____	_____
_____	_____
_____	_____

B. Bidder has visited the Site and become familiar with and is satisfied as to the general, local, and Site conditions that may affect cost, progress, and performance of the Work.

C. Bidder is familiar with and is satisfied as to all Laws and Regulations that may affect cost, progress, and performance of the Work.

D. Bidder has carefully studied all: (1) reports of explorations and tests of subsurface conditions at or contiguous to the Site and all drawings of physical conditions relating to existing surface or subsurface structures at the Site (except Underground Facilities) that have been identified in SC-5.03 as containing reliable "technical data," and (2) reports and drawings of Hazardous Environmental Conditions, if any, at the Site that have been identified in SC-5.06 as containing reliable "technical data."

E. Bidder has considered the information known to Bidder; information commonly known to contractors doing business in the locality of the Site; information and observations obtained from visits to the Site; the Bidding Documents; and the Site-related reports and drawings identified in the Bidding Documents, with respect to the effect of such information, observations, and documents on (1) the cost, progress, and performance

of the Work; (2) the means, methods, techniques, sequences, and procedures of construction to be employed by Bidder, including applying the specific means, methods, techniques, sequences, and procedures of construction expressly required by the Bidding Documents; and (3) Bidder's safety precautions and programs.

- F. Bidder has obtained and carefully studied (or assumes responsibility for having done so) all additional or supplementary examinations, investigations, explorations, test, studies and data concerning conditions (surface, subsurface and Underground Facilities) at or contiguous to the Site which may affect cost, progress, or performance of the Work or which relate to any aspect of the means, methods, techniques, sequences, and procedures of construction to be employed by Bidder, including applying the specific means, methods, techniques, sequences, and procedures of construction expressly required by the Bidding Documents to be employed by Bidder safety precautions and programs incident thereto.
- G. Based on the information and observations referred to in Paragraph 3.01.E above, Bidder does not consider that further examinations, investigations, explorations, tests, studies, or data are necessary for the determination of this Bid for performance of the Work at the price(s) bid and within the times required, and in accordance with the other terms and conditions of the Bidding Documents.
- H. Bidder is aware of the general nature of work to be performed by Owner and others at the Site that relates to the Work as indicated in the Bidding Documents.
- I. Bidder has given Owner written notice of all conflicts, errors, ambiguities, or discrepancies that Bidder has discovered in the Bidding Documents, and the written resolution thereof by Owner is acceptable to Bidder.
- J. The Bidding Documents are generally sufficient to indicate and convey understanding of all terms and conditions for the performance of the Work for which this Bid is submitted.

ARTICLE 4 – BIDDER'S CERTIFICATION

4.01 Bidder certifies that:

- A. This Bid is genuine and not made in the interest of or on behalf of any undisclosed individual or entity and is not submitted in conformity with any collusive agreement or rules of any group, association, organization, or corporation;
- B. Bidder has not directly or indirectly induced or solicited any other Bidder to submit a false or sham Bid;
- C. Bidder has not solicited or induced any individual or entity to refrain from bidding; and
- D. Bidder has not engaged in corrupt, fraudulent, collusive, or coercive practices in competing for the Contract. For the purposes of this Paragraph 4.01.D:
 - 1. "corrupt practice" means the offering, giving, receiving, or soliciting of anything of value likely to influence the action of a public official in the bidding process;
 - 2. "fraudulent practice" means an intentional misrepresentation of facts made (a) to influence the bidding process to the detriment of Owner, (b) to establish bid prices at artificial non-competitive levels, or (c) to deprive Owner of the benefits of free and open competition;
 - 3. "collusive practice" means a scheme or arrangement between two or more Bidders, with or without the knowledge of Owner, a purpose of which is to establish bid prices at artificial, non-competitive levels; and

4. “coercive practice” means harming or threatening to harm, directly or indirectly, persons or their property to influence their participation in the bidding process or affect the execution of the Contract.

ARTICLE 5 – BASIS OF BID

Bidder will complete the Work in accordance with the Contract Documents for the following price(s):

BID SCHEDULE A – BASE BID: DOWNTOWN REVITALIZATION PHASE II

Item No.	Description	Unit	Estimated Quantity	Bid Unit Price	Bid Price
2010.4.1.A.1	Mobilization Per Lump Sum	LS	1	LUMP SUM	\$ _____
2015.4.1.A.1	Other Temporary Work	LS	1	LUMP SUM	\$ _____
1001.4.1.A.1	Sediment Control and Construction Site Management Per Lump Sum	LS	1	LUMP SUM	\$ _____
2020.4.1.H.1	Construction Staking Per Lump Sum	LS	1	LUMP SUM	\$ _____
1103.4.1.A.1	Construction Traffic Control Per Lump Sum	LS	1	LUMP SUM	\$ _____
201.4.1.B.1	Clearing and Grubbing Per Lump Sum	LS	1	LUMP SUM	\$ _____
201.4.1.C.1	Removal of Obstructions Per Lump Sum	LS	1	LUMP SUM	\$ _____
201.4.1.G.1	Temporary Support of Structure(s) Per Lump Sum	LS	1	LUMP SUM	\$ _____
201.4.1.H.1	Permanent Shoring, Coal Chutes	EA	3	\$ _____	\$ _____
202.4.1.A.1	Excavation Per Cubic Yard	CY	5,200	\$ _____	\$ _____
202.4.5.A.1	Unsuitable Material Excavation Per Cubic Yard	CY	520	\$ _____	\$ _____
202.4.5.C.1	Unsuitable Material Repair Per Cubic Yard	CY	520	\$ _____	\$ _____
802.4.1.B.1	Crushed Aggregate for Base Type I Per Ton	TON	3,440	\$ _____	\$ _____

802.4.1.E.1	Rock Cap Class 1 Per Ton	TON	6,075	\$ _____	\$ _____
2050.4.1.C.1	Subgrade Separation Geotextile Per Square Yard	SY	9,560	\$ _____	\$ _____
304.4.1.A.1	Trench Foundation Stabilization Per Cubic Yard	CY	100	\$ _____	\$ _____
306.4.1.D.2	Imported Trench Backfill Per Cubic Yard	CY	505	\$ _____	\$ _____
601.4.1.A.1	30-Inch Storm Drain Pipe, Class ASTM F-679 PVC Per Linear Foot	LF	121	\$ _____	\$ _____
601.4.1.A.2	24-Inch Storm Drain Pipe, Class ASTM F-679 PVC Per Linear Foot	LF	480	\$ _____	\$ _____
601.4.1.A.3	18-Inch Storm Drain Pipe, Class ASTM F-679 PVC Per Linear Foot	LF	252	\$ _____	\$ _____
601.4.1.A.4	12-Inch Storm Drain Pipe, Class ASTM D-3034 PVC Per Linear Foot	LF	242	\$ _____	\$ _____
601.4.1.A.5	10-Inch Storm Drain Pipe, Class ASTM D-3034 PVC Per Linear Foot	LF	53	\$ _____	\$ _____
601.4.1.A.6	8-Inch Storm Drain Pipe, Class ASTM D-3034 PVC Per Linear Foot	LF	52	\$ _____	\$ _____
601.4.1.A.7	6-Inch Storm Drain Pipe, Class ASTM D-3034 PVC Per Linear Foot	LF	130	\$ _____	\$ _____
601.4.1.A.8	4-Inch Perforated Storm Drain Pipe, Class ASTM D-3034 PVC Per Linear Foot	LF	1,805	\$ _____	\$ _____
601.4.1.A.9	4-Inch Storm Drain Pipe, Class ASTM D-3034 PVC Per Linear Foot	LF	199	\$ _____	\$ _____
601.4.1.A.10	4-Inch Storm Drain Service Pipe, Class ASTM D-3034 PVC Per Linear Foot	LF	745	\$ _____	\$ _____
601.4.1.A.11	4-Inch Storm Drain Service Cleanout Per Each	EA	21	\$ _____	\$ _____
602.4.1.A.1	Storm Drain Manhole, Type A Per Each	EA	6	\$ _____	\$ _____
602.4.1.A.2	Storm Drain Manhole, Type B Per Each	EA	3	\$ _____	\$ _____

602.4.1.F.1	Catch Basin – WSDOT Type 1 Per Each	EA	7	\$ _____	\$ _____
810.4.1.A.1	Plant Mix Pavement Per Ton	TON	1,500	\$ _____	\$ _____
706.4.1.A.5	Standard 19-Inch Curb & Gutter Per Linear Foot	LF	1,572	\$ _____	\$ _____
706.4.1.A.13	Storm Garden Curb & Gutter Per Linear Foot	LF	113	\$ _____	\$ _____
706.4.1.I.1	Curb Drop Per Each	EA	12	\$ _____	\$ _____
706.4.1.E.1	Concrete Sidewalks, Thickness 4-Inch Per Square Yard	SY	2,447	\$ _____	\$ _____
706.4.1.F.1	Concrete Driveway Approach Per Square Yard	SY	63	\$ _____	\$ _____
706.4.1.H.1	Pedestrian Ramp w/detectable Warning Domes, Type A Per Each	EA	14	\$ _____	\$ _____
706.4.1.H.2	Pedestrian Ramp w/detectable Warning Domes, Type D Per Each	EA	4	\$ _____	\$ _____
901.4.1.C.1	Pressure Irrigation System Per Lump Sum	LS	1	LUMP SUM	\$ _____
1104.4.1.A.1	Pavement Line Paint or Painted Pavement Markings Per Square Foot	SF	3,500	\$ _____	\$ _____
1104.4.1.B.1	Thermoplastic Pavement Markings Per Square Foot	SF	1,412	\$ _____	\$ _____
1105.4.1.F.1	Install Owner-Furnished Sign Per Each	EA	10	\$ _____	\$ _____
1105.4.1.G.1	Restore Existing Sign Per Each	EA	50	\$ _____	\$ _____
1105.4.1.E.1	Traffic Bollard Per Each	EA	10	\$ _____	\$ _____
2030.4.1.D.1	Miscellaneous Utilities, Adjust to Grade Per Lump Sum	LS	1	LUMP SUM	\$ _____

703.4.1.A.1	Concrete (Cast-In-Place) – Class 3000 Per Cubic Yard	CY	24.5	\$ _____	\$ _____
703.4.1.B.1	Concrete Curb Wall at Stormwater Planter Per Linear Foot	LF	133	\$ _____	\$ _____
2080.4.1.A.1	Unit Pavers, Installation and all Incidentals Per Square Foot	SF	6178	\$ _____	\$ _____
2090.4.1.A.1	Cultured Stone Veneer Per Face Foot	FF	315	\$ _____	\$ _____
704.4.2.A.1	Precast Wall Cap Per Each	EA	56	\$ _____	\$ _____
2060.4.1.A.1	Bench, Type A (with back) Per Each	EA	1	\$ _____	\$ _____
2060.4.1.A.2	Bench, Type B (backless) Per Each	EA	10	\$ _____	\$ _____
2060.4.1.A.3	Bicycle Rack Per Each	EA	16	\$ _____	\$ _____
203.4.1.A.1	Topsoil Type S6 Ornamental Planter Soil Per Cubic Yard	CY	54	\$ _____	\$ _____
203.4.1.A.3	Topsoil Type S7 Water Quality Soil Per Cubic Yard	CY	39	\$ _____	\$ _____
203.4.1.A.5	Topsoil Type S8 Structural Soil Per Cubic Yard	CY	692	\$ _____	\$ _____
2070.4.1.A.1	Bark Mulch, Installation and Incidentals Per Cubic Yard	CY	9	\$ _____	\$ _____
2070.4.1.A.3	One (1) Gallon Shrubs, Installation and Incidentals Per Each	EA	290	\$ _____	\$ _____
2070.4.1.A.5	Two (2) Gallon Shrubs, Installation and Incidentals Per Each	EA	6	\$ _____	\$ _____
2070.4.1.A.9	Five (5) Gallon Shrubs, Installation and Incidentals Per Each	EA	12	\$ _____	\$ _____

SANDPOINT CONTRACT NO. 19-8092 | DOWNTOWN REVITALIZATION PHASE II – REVISED PER ADDENDUM #1

2070.4.1.A.11	Trees, Two and One-half Caliper (2 1/2") Tree, Installation and Incidentals Per Each	EA	45	\$ _____	\$ _____
2070.4.1.A.13	Mineral Mulch, Installation and Incidentals Per Cubic Yard	CY	6.5	\$ _____	\$ _____
2070.4.1.A.14	Plant Establishment Per Lump Sum	LS	1	LUMP SUM	\$ _____
2075.4.1.A.1	Bio-Infiltration System Per Each	EA	1	\$ _____	\$ _____
1102.4.1.E.1	Conduit, Size 1" Per Linear Foot	LF	4,470	\$ _____	\$ _____
1102.4.1.E.2	Conduit, Size 1-1/4" Per Linear Foot	LF	673	\$ _____	\$ _____
1102.4.1.E.3	Conduit, Size 1-1/2" Per Linear Foot	LF	158	\$ _____	\$ _____
1102.4.1.E.4	Install HDPE Microduct Per Linear Foot	LF	4,362	\$ _____	\$ _____
1102.4.1.E.5	Smoothwall HDPE tubing, 1/2" Per Linear Foot	LF	2,542	\$ _____	\$ _____
1102.4.1.E.6	Conduit, Size 2" Per Linear Foot	LF	1,482	\$ _____	\$ _____
1102.4.1.F.1	Fiber Vault Per Each	EA	10	\$ _____	\$ _____
1102.4.1.G.1	Service and Power Distribution Pedestals and Appurtenances Per Lump Sum	LS	1	LUMP SUM	\$ _____
1102.4.1.A.1	Pole Base and Appurtenances for Street Light "L1" Per Each	EA	27	\$ _____	\$ _____
1102.4.1.B.1	Avista Cobrahead Base and Appurtenances Per Each	EA	12	\$ _____	\$ _____
1102.4.1.C.1	Tree Receptacle Post Box, and Assembly Per Each	EA	46	\$ _____	\$ _____
TOTAL OF BID SCHEDULE A				\$ _____	

**BID SCHEDULE C – ADDITIVE ALTERNATE #2:
MAIN STREET CONCRETE INTERSECTION**

Item No.	Description	Unit	Estimated Quantity	Bid Unit Price	Bid Price
705.4.1.A.1	Portland Cement Concrete Pavement, Pigmented Per Square Yard	SY	259	\$ _____	\$ _____
TOTAL OF BID SCHEDULE C				\$ _____	

**BID SCHEDULE D – OPTIONAL ADDITIVE ALTERNATE #3:
ACCELERATION BONUS**

Item No.	Description	Unit	Estimated Quantity	Bid Unit Price	Bid Price
2011.4.2.A.1	Acceleration Per Lump Sum	LS	1	LUMP SUM	\$ _____
TOTAL OF BID SCHEDULE D				\$ _____	

- 5.01 Bid prices listed shall include all applicable taxes and fees.
- 5.02 Unit Prices have been computed in accordance with the Contract Documents.
- 5.03 Bidder acknowledges that estimated quantities are not guaranteed and are solely for the purpose of comparison of Bids, and final payment for all unit price Bid items will be based on actual quantities, determined as provided in the Contract Documents.

ARTICLE 6 – TIME OF COMPLETION & EMPLOYMENT

- 6.01 Bidder agrees that all items included in the Base Bid and Additive Alternate No. 2, if awarded, will be substantially complete by May 14, 2020 and will be completed and ready for final payment in accordance with the General Conditions by June 5, 2020.
- 6.02 Bidder agrees that Milestone 1 will be completed on or before October 30, 2019 and that Milestone 2 will be completed on or before November 26, 2019.
- 6.03 Bidder agrees that if Additive Alternate No. 3 is awarded, all items included in the Base Bid and Additive Alternate No. 2, if awarded, will be will be substantially complete, except Plant Establishment, by the Milestone 2 date and will be completed and ready for final payment in accordance with the General Conditions by June 5, 2020. Bidder agrees that all references to No Excuse Bonus terms and amounts will be void and not incorporated into the Contract, if Additive Alternate No. 3 is awarded.
- 6.04 Bidder agrees that if Additive Alternate No. 3 is awarded, failure to achieve Substantial Completion by the Milestone 2 date will result in no payment associated with Additive

Alternate No. 3. Contract Times are not modified and Liquidated Damages apply as stated in the Contract.

- 6.05 Bidder accepts the provisions of the Contract Documents as to liquidated damages.
- 6.06 Bidder agrees to comply with Idaho Code 44-1001 through 44-1005, regarding employment of Idaho residents.

ARTICLE 7 – ATTACHMENTS TO THIS BID

- 7.01 The following documents are submitted with and made a condition of this Bid:
 - A. Required Bid security in the form of: cash, a certified check, cashier’s check, or a Bid bond (on the form attached) issued by a surety meeting the requirements of the General Conditions.;
 - B. Bidder shall include in his Bid the name, or names and address, or addresses, and Idaho Public Works Contractor License Numbers of the Subcontractors who shall, in the event the Bidder secures the Contract, subcontract the plumbing, heating and air-conditioning work, and electrical work under the general Contract;
 - C. State of Idaho Public Works Contractor’s License No.: _____ ;
 - D. *Not Used*

ARTICLE 8 – DEFINED TERMS

- 8.01 The terms used in this Bid with initial capital letters have the meanings stated in the Bidding Documents.

ARTICLE 9 – BID SUBMITTAL

9.01 This Bid is submitted by:

If Bidder is:

An Individual

Name (typed or printed): _____

By: _____
(Individual's signature)

Doing business as: _____

A Partnership

Partnership Name: _____

By: _____
(Signature of general partner -- attach evidence of authority to sign)

Name (typed or printed): _____

A Corporation

Corporation Name: _____ (SEAL)

State of Incorporation: _____

Type (General Business, Professional, Service, Limited Liability): _____

By: _____
(Signature -- attach evidence of authority to sign)

Name (typed or printed): _____

Title: _____
(CORPORATE SEAL)

Attest _____

Date of Qualification to do business in Idaho is ____/____/____.

A Joint Venture

Name of Joint Venture: _____

First Joint Venturer Name: _____ (SEAL)

By: _____
(Signature of first joint venture partner -- attach evidence of authority to sign)

Name (typed or printed): _____

Title: _____

Second Joint Venturer Name: _____ (SEAL)

By: _____
(Signature of second joint venture partner -- attach evidence of authority to sign)

Name (typed or printed): _____

Title: _____

(Each joint venturer must sign. The manner of signing for each individual, partnership, and corporation that is a party to the joint venture should be in the manner indicated above.)

Bidder's Business Address _____

Phone No. _____ Fax No. _____

E-mail _____

SUBMITTED on _____, 20____.

Idaho Public Works Contractor License No. _____.

BID BOND

Any singular reference to Bidder, Surety, Owner or other party shall be considered plural where applicable.

BIDDER (*Name and Address*):

SURETY (*Name and Address of Principal Place of Business*):

OWNER (*Name and Address*):

City of Sandpoint
1123 Lake St.
Sandpoint, ID 83864

BID

Bid Due Date:

Description (*Project Name and Include Location*):

Downtown Revitalization Phase II, Sandpoint, Idaho (Project No. 19-8092)

BOND

Bond Number: _____

Date (*Not earlier than Bid due date*): _____

Penal sum _____ \$ _____

(Written in Words)

(Figures)

Surety and Bidder, intending to be legally bound hereby, subject to the terms set forth below, do each cause this Bid Bond to be duly executed by an authorized officer, agent, or representative.

BIDDER

SURETY

Bidder's Name and Corporate Seal (Seal)

Surety's Name and Corporate Seal (Seal)

By: _____
Signature

By: _____
Signature (Attach Power of Attorney)

Print Name

Print Name

Title

Title

Attest: _____
Signature

Attest: _____
Signature

Title

Title

Note: Above addresses are to be used for giving any required notice. Provide execution by any additional parties, such as joint ventures, if necessary.

1. Bidder and Surety, jointly and severally, bind themselves, their heirs, executors, administrators, successors, and assigns to pay to Owner upon default of Bidder the penal sum set forth on the face of this Bond. Payment of the penal sum is the extent of Bidder's and Surety's liability. Recovery of such penal sum under the terms of this Bond shall be Owner's sole and exclusive remedy upon default of Bidder.
2. Default of Bidder shall occur upon the failure of Bidder to deliver within the time required by the Bidding Documents (or any extension thereof agreed to in writing by Owner) the executed Agreement required by the Bidding Documents and any performance and payment bonds required by the Bidding Documents.
3. This obligation shall be null and void if:
 - 3.1 Owner accepts Bidder's Bid and Bidder delivers within the time required by the Bidding Documents (or any extension thereof agreed to in writing by Owner) the executed Agreement required by the Bidding Documents and any performance and payment bonds required by the Bidding Documents, or
 - 3.2 All Bids are rejected by Owner, or
 - 3.3 Owner fails to issue a Notice of Award to Bidder within the time specified in the Bidding Documents (or any extension thereof agreed to in writing by Bidder and, if applicable, consented to by Surety when required by Paragraph 5 hereof).
4. Payment under this Bond will be due and payable upon default of Bidder and within 30 calendar days after receipt by Bidder and Surety of written notice of default from Owner, which notice will be given with reasonable promptness, identifying this Bond and the Project and including a statement of the amount due.
5. Surety waives notice of any and all defenses based on or arising out of any time extension to issue Notice of Award agreed to in writing by Owner and Bidder, provided that the total time for issuing Notice of Award including extensions shall not in the aggregate exceed 120 days from Bid due date without Surety's written consent.
6. No suit or action shall be commenced under this Bond prior to 30 calendar days after the notice of default required in Paragraph 4 above is received by Bidder and Surety and in no case later than one year after Bid due date.
7. Any suit or action under this Bond shall be commenced only in a court of competent jurisdiction located in the state in which the Project is located.
8. Notices required hereunder shall be in writing and sent to Bidder and Surety at their respective addresses shown on the face of this Bond. Such notices may be sent by personal delivery, commercial courier, or by United States Registered or Certified Mail, return receipt requested, postage pre-paid, and shall be deemed to be effective upon receipt by the party concerned.
9. Surety shall cause to be attached to this Bond a current and effective Power of Attorney evidencing the authority of the officer, agent, or representative who executed this Bond on behalf of Surety to execute, seal, and deliver such Bond and bind the Surety thereby.
10. This Bond is intended to conform to all applicable statutory requirements. Any applicable requirement of any applicable statute that has been omitted from this Bond shall be deemed to be included herein as if set forth at length. If any provision of this Bond conflicts with any applicable statute, then the provision of said statute shall govern and the remainder of this Bond that is not in conflict therewith shall continue in full force and effect.
11. The term "Bid" as used herein includes a Bid, offer, or proposal as applicable.



Know what's below.
Call before you dig.

GENERAL CONSTRUCTION NOTES:

1. ALL WORK SHALL BE COMPLETED IN ACCORDANCE WITH THE IDAHO STANDARDS FOR PUBLIC WORKS CONSTRUCTION (ISPMC) LATEST EDITION.

STORM SEWER NOTES:

1. ALL WORK SHALL BE COMPLETED IN ACCORDANCE WITH THE IDAHO STANDARDS FOR PUBLIC WORKS CONSTRUCTION (ISPMC) LATEST EDITION EXCEPT AS PROVIDED IN THE NOTES BELOW.
2. STORM SEWER SERVICES WILL BE INSTALLED AS DIRECTED BY CITY OF SANDPOINT PERSONNEL AND AS SHOWN ON THE PLANS.
3. STORM SEWER MANHOLES SHALL BE PER ISPMC STANDARD DRAWINGS AS FOLLOWS:
MHS A,B,E,F,G,H; STANDARD MANHOLE, TYPE A (SD-612)
MHS C,C-1,D; STANDARD MANHOLE, TYPE B (SD-613)
ALL MANHOLES SHALL HAVE PRECAST BASE. TYPE A MANHOLES SHALL HAVE CONCENTRIC CONES. MANHOLE RING AND COVER FOR TYPE B MANHOLES SHALL BE CENTERED OVER CHANNEL ON THE FLAT TOP. ALTERNATE CAST-IN-PLACE BASE WILL BE ALLOWED FOR MH D.
4. MH RINGS AND LIDS SHALL BE IFC0828 AND CITY OF SANDPOINT SPECIAL DESIGN. ADJUST ELEVATIONS TO FINISH GRADE USING GRADE RINGS OR AN APPROVED CAST-IN-PLACE ADJUSTMENT METHOD. THE MAXIMUM DISTANCE FROM THE TOP OF THE CONE SECTION TO FINISHED GRADE SHALL BE NO MORE THAN 12 INCHES. RAM NEC SHALL BE USED BETWEEN GRADE RINGS; NO GROUT WILL BE ALLOWED ON THE INSIDE.
5. CATCH BASIN INLETS SHALL BE WSDOT TYPE 1.
6. STORM DRAIN CLEANOUTS SHALL BE PER DETAIL 1, SHEET CP10.
7. STORM SEWER MAIN SHALL BE SOLID WALL PVC (OR APPROVED EQUAL) MEETING ASTM D-3034 OR ASTM F679. MAINS SHALL BE WASHED BY CONTRACTOR AND VIDEOED AND REVIEWED BY CITY CREWS PRIOR TO PAVING.
8. INLET CONNECTIONS SHALL BE SOLID WALL 6" PVC SDR 35 ASTM D 3034.
9. CONTRACTOR IS RESPONSIBLE FOR ALL TESTING IN ACCORDANCE WITH ISPMC SECTION 501.3.4 PRIOR TO ACCEPTANCE OF STORM SEWER MAINS BY THE CITY.
10. STORM SEWER SERVICES SHALL BE 4" PVC SDR 35 ASTM D3034 WITH GPK SADDLE TEE AT THE MAIN. IN NO CASE SHALL A STORM LATERAL CONNECT TO THE STORM SEWER MAIN DIRECTLY ON THE TOP OF THE PIPE.
11. CONTRACTOR IS RESPONSIBLE FOR PROVIDING AS-BUILT DRAWINGS IN PAPER FORMAT (2 SETS OF PLANS). SUBMITTAL OF PLANS MUST OCCUR BEFORE ACCEPTANCE OF THE SYSTEM BY THE CITY.
12. STORM DRAIN BACKFILL MATERIAL SHALL BE IN ACCORDANCE WITH THE CONTRACT DOCUMENTS.
13. CONTRACTOR SHALL VERIFY EXISTING INVERTS TO ENSURE GRAVITY FLOW OF NEW MAIN PRIOR TO MAIN LINE INSTALLATION.
14. EXISTING STORM SEWER MANHOLES AND STORM SEWER LINES TO BE REMOVED SHALL BE ABANDONED BY REMOVING THE TOP SECTION OF THE MANHOLE AND FILLING WITH CRUSHED SURFACING. LINES SHALL BE PLUGGED AT BOTH ENDS WITH GROUT.

STAGING AREA



ISSUED FOR CONSTRUCTION

REUSE OF DOCUMENTS

THIS DRAWING, AND THE DESIGNS INCORPORATED HEREIN, AS AN INSTRUMENT OF PROFESSIONAL SERVICE, IS THE PROPERTY OF CENTURY WEST ENGINEERING CORPORATION, AND IS NOT TO BE USED, IN WHOLE OR IN PART, FOR ANY OTHER PROJECT WITHOUT THE WRITTEN CONSENT OF CENTURY WEST ENGINEERING CORPORATION.

© CENTURY WEST ENGINEERING CORPORATION



VERIFY SCALES
BAR IS ONE INCH ON ORIGINAL DRAWING.
IF NOT ONE INCH ON THIS SHEET, ADJUST SCALES ACCORDINGLY.

NO.	DATE	BY	APPR	REVISIONS
1	7/1/19	NDN	DDF	ADDENDUM #1



SPOKANE OFFICE
11707 E. MONTGOMERY DRIVE
SPOKANE VALLEY, WA 99206
509.838.3810
509.824.0355 FAX

DATE: 4/19/2019

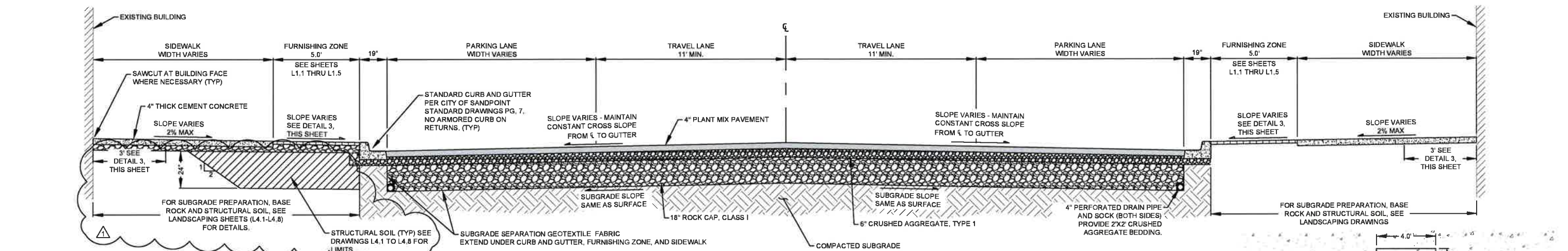
PROJECT NO: 51004.001.10

DESIGNED BY: DDF
DRAWN BY: NDN
CHECKED BY: DDF
SCALE: N/A

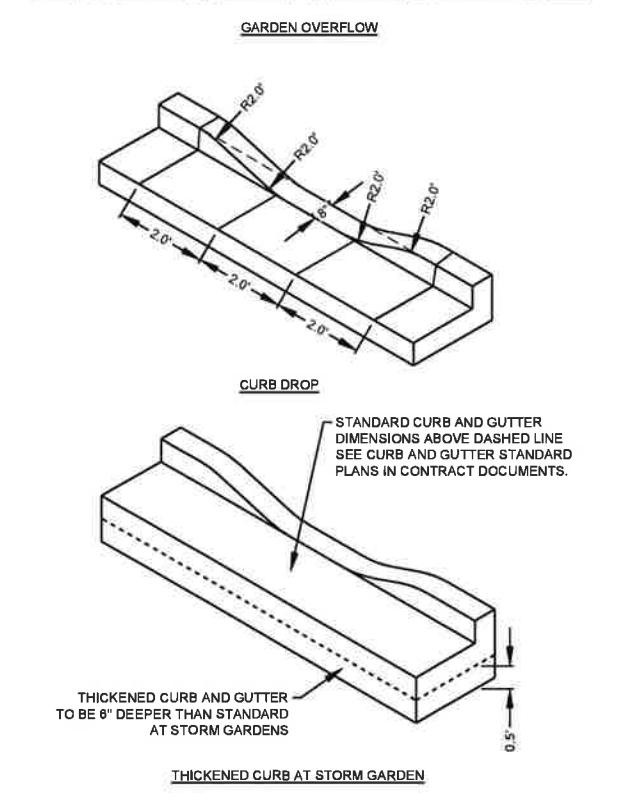
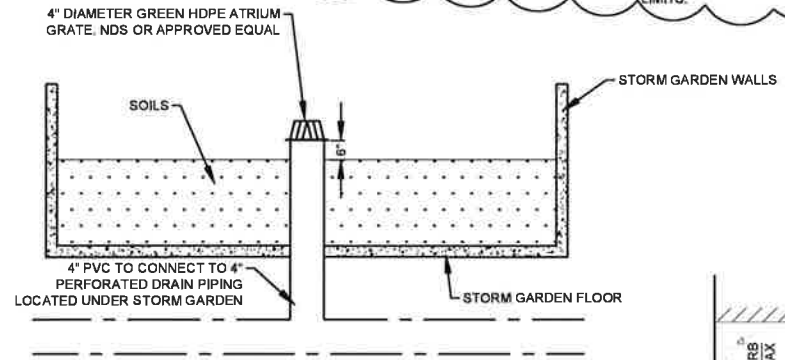
CITY OF SANDPOINT
DOWNTOWN REVITALIZATION PROJECT - PHASE II

GENERAL NOTES & STAGING AREA

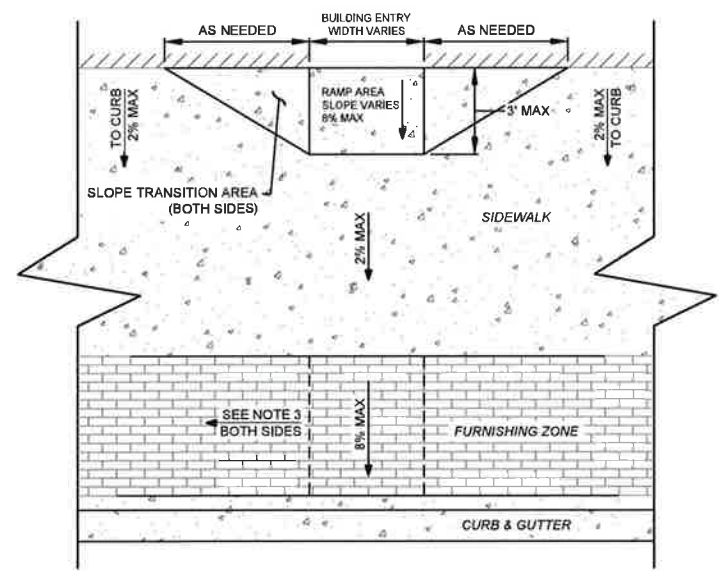
DRAWING NO. G-03
SHEET NO. 3 OF 47



TYPICAL ROADWAY CROSS SECTION 1
N.T.S. CP-09



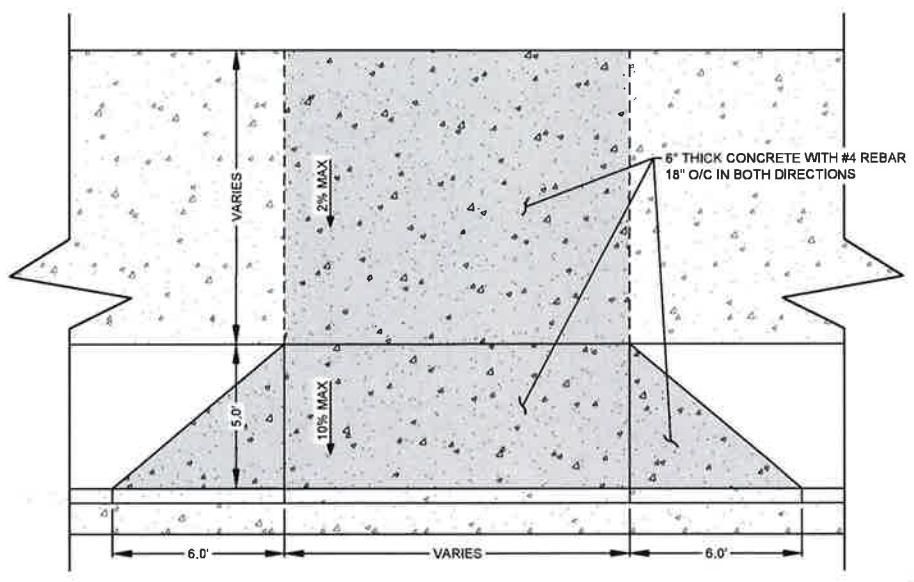
STORM GARDEN CURB AND OVERFLOW 2
N.T.S. CP-09



SPECIAL BUILDING ENTRY RAMP 3
N.T.S. CP-09

NOTES:

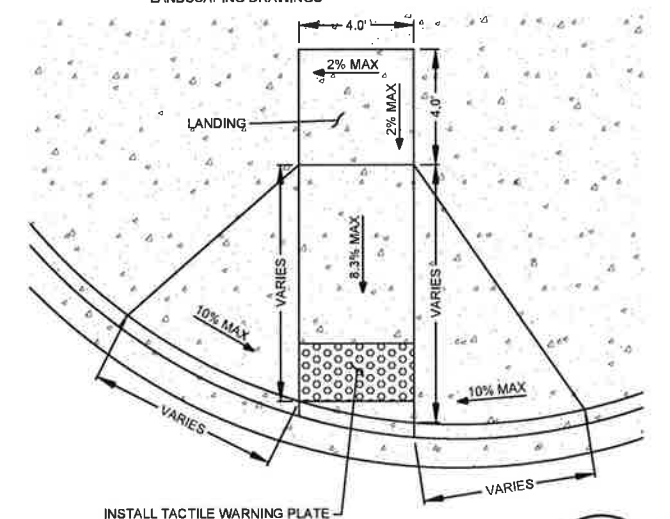
- SPECIAL BUILDING ENTRY RAMPS SHALL ONLY BE PERMITTED WHEN SIDEWALK SLOPE OF 2% AND FURNISHING ZONE SLOPES OF 8% WILL RESULT IN BUILDING ENTRY ELEVATION ABOVE BACK OF SIDEWALK.
- WHERE FURNISHING ZONE SLOPE MUST EXCEED 2%, SLOPE SHALL BE TRANSITIONED IN A MANNER THAT PROVIDES A WALKABLE SURFACE.



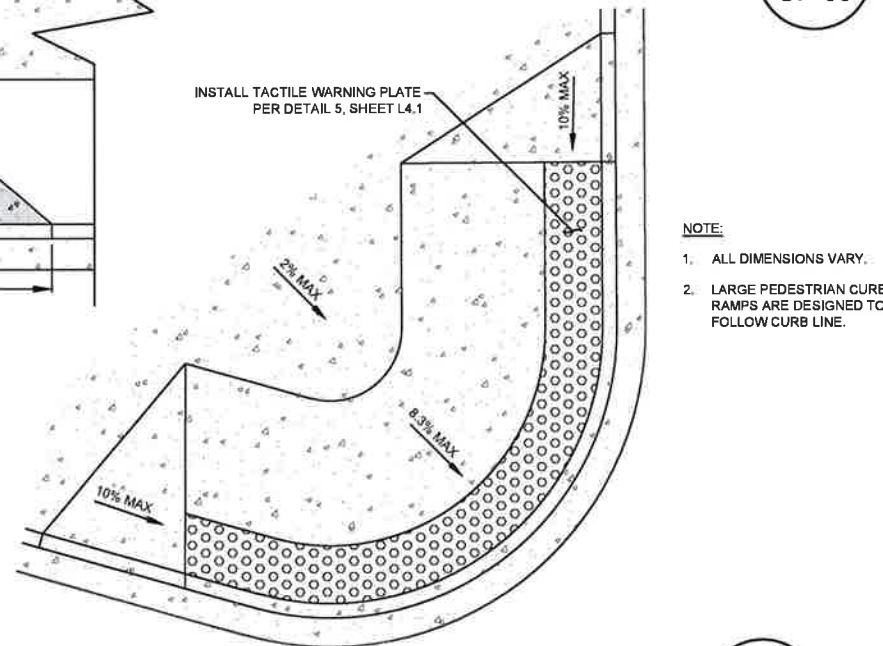
CONCRETE DRIVEWAY APPROACH 4
N.T.S. CP-09

NOTE:

- BASE MATERIAL IN SHADED DRIVEWAY APPROACH AREA SHALL BE 10" CRUSHED AGGREGATE, TYPE I.



PEDESTRIAN CURB RAMP 5
N.T.S. CP-09



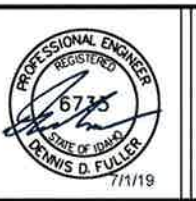
LARGE PEDESTRIAN CURB RAMP 6
N.T.S. CP-09

ISSUED FOR CONSTRUCTION

REUSE OF DOCUMENTS

THIS DRAWING, AND THE DESIGNS INCORPORATED HEREIN, AS AN INSTRUMENT OF PROFESSIONAL SERVICE, IS THE PROPERTY OF CENTURY WEST ENGINEERING CORPORATION, AND IS NOT TO BE USED, IN WHOLE OR IN PART, FOR ANY OTHER PROJECT WITHOUT THE WRITTEN CONSENT OF CENTURY WEST ENGINEERING CORPORATION.

© CENTURY WEST ENGINEERING CORPORATION



VERIFY SCALES

BAR IS ONE INCH ON ORIGINAL DRAWING.

0" = 1"

IF NOT ONE INCH ON THIS SHEET, ADJUST SCALES ACCORDINGLY.

NO.	DATE	BY	APPR	REVISIONS
1	7/1/19	NDN	DDF	ADDENDUM #1

CENTURY WEST ENGINEERING

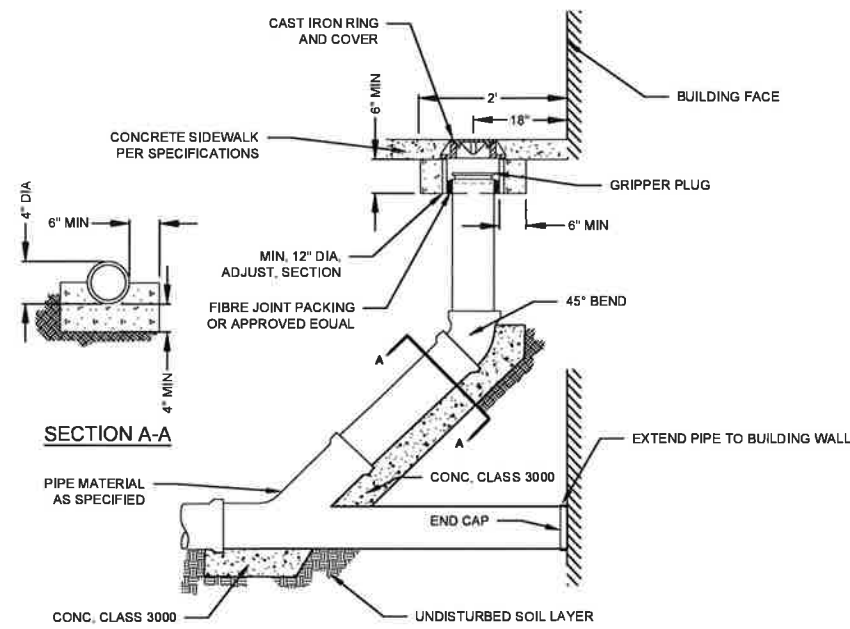
SPokane Office
11707 E. MONTGOMERY DRIVE
SPOKANE VALLEY, WA 99208
509.838.3810
509.824.0355 FAX

DATE: 4/19/2019 PROJECT NO: 51004.001.10

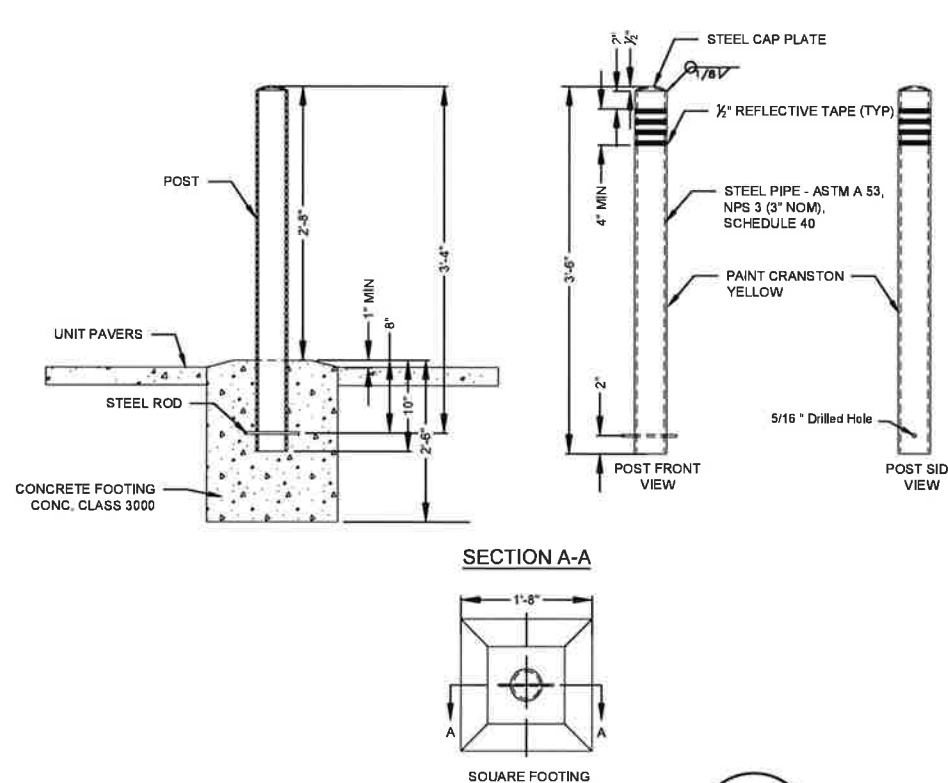
DESIGNED BY: DDF
DRAWN BY: NDN
CHECKED BY: DDF
SCALE: AS SHOWN

CITY OF SANDPOINT
DOWNTOWN REVITALIZATION PROJECT - PHASE II
CIVIL DETAILS

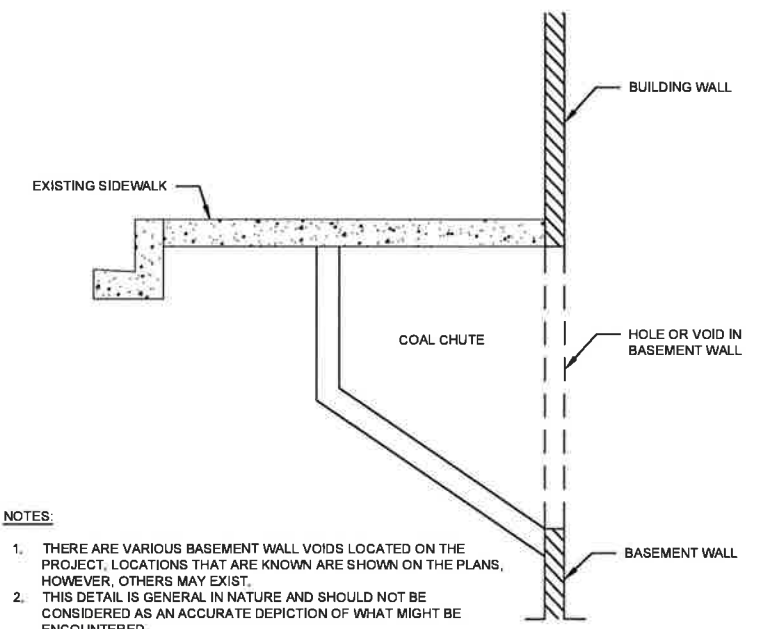
DRAWING NO. CP-09
SHEET NO. 12 OF 47



STORM SEWER STUB CLEANOUT 1
N.T.S. CP-10

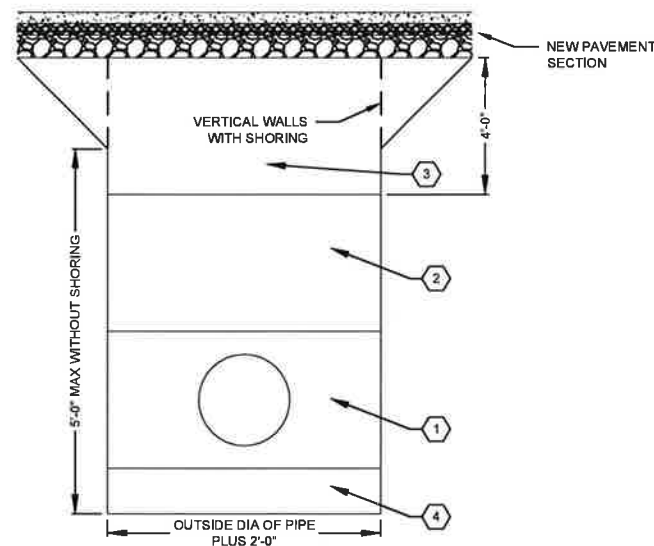


BOLLARD DETAIL 2
N.T.S. CP-10

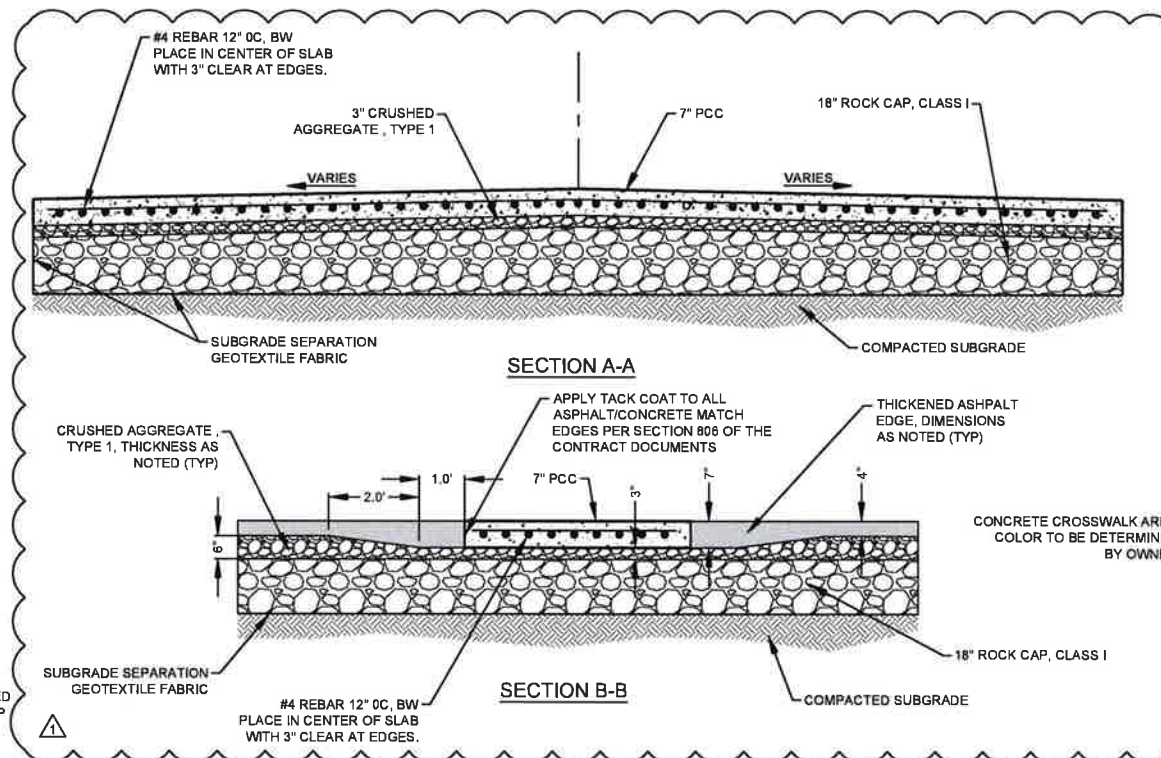


- NOTES:**
1. THERE ARE VARIOUS BASEMENT WALL VOIDS LOCATED ON THE PROJECT, LOCATIONS THAT ARE KNOWN ARE SHOWN ON THE PLANS, HOWEVER, OTHERS MAY EXIST.
 2. THIS DETAIL IS GENERAL IN NATURE AND SHOULD NOT BE CONSIDERED AS AN ACCURATE DEPICTION OF WHAT MIGHT BE ENCOUNTERED.
 3. WHEN ENCOUNTERED THE CONTRACTOR SHALL PROVIDE A PLAN FOR PERMANENT SHORING THAT WILL ALLOW BACKFILL AND SIDEWALK CONSTRUCTION TO PROCEED. SHORING PLAN SHALL BE PREPARED AND STAMPED BY AN ENGINEER LICENSED TO PRACTICE IN THE STATE OF IDAHO. PLAN AND ENGINEERING CALCULATIONS SHALL BE SUBMITTED TO THE CITY PRIOR TO INSTALLATION OF SHORING.

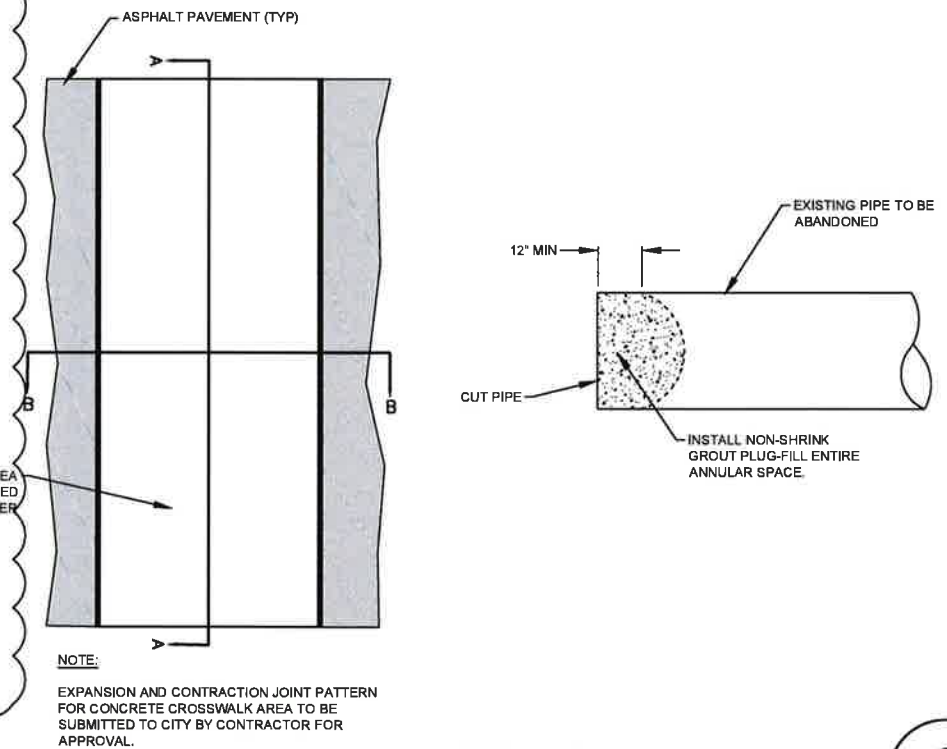
BASEMENT PENETRATION 3
N.T.S. CP-10



TYPICAL TRENCH DETAIL 4
N.T.S. CP-10



ADDITIVE ALTERNATE 2 CONCRETE CROSSWALK 5
N.T.S. CP-10



EXISTING PIPE PLUG DETAIL 6
N.T.S. CP-10

- KEYED NOTES:**
- 1 PIPE BEDDING; SD-302, SECTION 305
 - 2 LOWER COMPACTION ZONE, TYPE A, SECTION 306.B.1
 - 3 UPPER COMPACTION ZONE, TYPE A, SECTION 306.B.2
 - 4 TRENCH FOUNDATION STABILIZATION (IF REQUIRED); SECTION 304
- NOTE:** IMPORTED TRENCH BACKFILL PAY LIMITS SHALL BE AS SHOWN UNLESS SHORING IS USED. IF SHORING IS USED LIMITS WILL BE VERTICAL TRENCH FROM BOTTOM TO SUBGRADE. IMPORTED TRENCH BACKFILL WILL BE MEASURED FROM TOP OF PIPE BEDDING TO ROADWAY SUBGRADE.

NOTE: EXPANSION AND CONTRACTION JOINT PATTERN FOR CONCRETE CROSSWALK AREA TO BE SUBMITTED TO CITY BY CONTRACTOR FOR APPROVAL.

ISSUED FOR CONSTRUCTION

REUSE OF DOCUMENTS
THIS DRAWING, AND THE DESIGNS INCORPORATED HEREIN, AS AN INSTRUMENT OF PROFESSIONAL SERVICE, IS THE PROPERTY OF CENTURY WEST ENGINEERING CORPORATION, AND IS NOT TO BE USED, IN WHOLE OR IN PART, FOR ANY OTHER PROJECT WITHOUT THE WRITTEN CONSENT OF CENTURY WEST ENGINEERING CORPORATION.



VERIFY SCALES
BAR IS ONE INCH ON ORIGINAL DRAWING. 0" = 1" IF NOT ONE INCH ON THIS SHEET, ADJUST SCALES ACCORDINGLY.

NO.	DATE	BY	APPR	REVISIONS
1	7/1/19	NDN	DDF	ADDENDUM #1



SPokane Office
11707 E. MONTGOMERY DRIVE
SPokane VALLEY, WA 99208
509.838.3810
509.824.0355 FAX

DATE: 4/19/2019 PROJECT NO: 51004.001.10

DESIGNED BY: DDF
DRAWN BY: NDN
CHECKED BY: DDF
SCALE: AS SHOWN

**CITY OF SANDPOINT
DOWNTOWN REVITALIZATION PROJECT - PHASE II**

CIVIL DETAILS

DRAWING NO. CP-10
SHEET NO. 13 OF 47